

THE MONTHLY MULE MEMO

OFFICIAL NEWSLETTER OF THE OFFICE OF ACADEMIC AND STUDENT AFFAIRS



Academic & Student Affairs

College of Veterinary Medicine

University of Missouri

W213 Vet Med Building

WORDS FROM THE ASSOCIATE DEAN

Training Your Brain for Veterinary Medicine, by Dr. Snider

Veterinary school is more than just memorizing facts—it's about training your brain to think. Every case you encounter isn't just a test of knowledge but a challenge in reasoning, problem-solving, and decision-making under uncertainty. The ability to recognize patterns, weigh evidence, and anticipate outcomes is what separates a competent veterinarian from a merely knowledgeable one.

Your education is shaping how you think, not just what you know. It's training System 1—your intuitive, experience-driven thinking—and System 2—the slower, analytical reasoning that solves complex problems. Both are essential in veterinary practice.

Want to dive deeper into how your mind makes decisions? Check out this month's review of *Thinking, Fast and Slow* by Daniel Kahneman elsewhere in this issue. Understanding how you think will make you more successful with examinations, a better clinician, a sharper diagnostician, and a more effective problem-solver.



NEW FINANCIAL AID ADVISOR

Welcome to our financial aid advisor, Angelynn Simonsen! Angelynn is excited to support our CVM students in pursuing their veterinary education. Angelynn will be training with campus Financial Aid for the next several months. When Angelynn is ready to start scheduling one-on-one appointments, an email will be sent out to students .

REGULAR FEATURES:

MONTHLY MESSAGE FROM DR. SNIDER
PAGE 01

MONTHLY NAVLE PREP QUESTION
PAGE 01

CLUB CORNER
PAGE 02

IMPORTANT UPCOMING DATES
PAGE 02

FOCUS ON WELLNESS
PAGE 03

PAWSOME AWARD WINNER
PAGE 03

VETERINARY READING RAINBOW
PAGE 03

MONTHLY NAVLE PREP QUESTION

You are called out to examine a 4-year old dromedary who was castrated 10-days ago and is now not eating. The groin and prepuce area are extremely swollen. The camel is unable to stand and is drooling. His neck is extended and he appears to be unable to swallow. Which of the following is most likely responsible for these symptoms?

- A. Rabies virus
- B. *Trypanosoma evansi*
- C. Methicillin-resistant *Staphylococcus aureus*
- D. *Clostridium tetani*

(ANSWER ON PAGE 3)

CLUB CORNER: VETERINARY DIAGNOSTIC IMAGING CLUB

The Veterinary Diagnostic Imaging Club (VDIC) is dedicated to students passionate about radiology and the critical role of diagnostic imaging in patient care. At the Veterinary Health Center (VHC), we are fortunate to have access to an array of advanced imaging modalities, and our club meetings are designed to spotlight their unique applications. Despite being a small group, we have embraced collaboration with other clubs to create meaningful learning experiences. For example, we partnered with the Emergency and Critical Care Club to analyze radiographs of common trauma cases and joined the Internal Medicine Club to discuss hyperthyroidism and the use of I-131 treatments. Most recently, we joined the Anesthesia and Analgesia Club which hosted Edge Life Technologies for a lecture and wet lab, where students practiced ultrasound techniques on models and personal pets while exploring its applications in anesthesia.

Looking ahead, we are excited to collaborate with the Equine Club to demonstrate the use of the newly added Standing CT at the VHC. Our mission is to emphasize the significance of diagnostic imaging in veterinary medicine and to build proficiency in interpreting imaging through hands-on practice and exposure.

VDIC Club Officers:

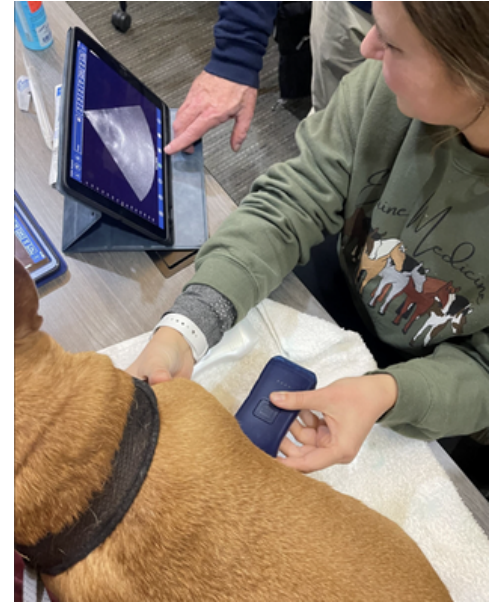
Erin Wiley – President
Mikaela Daoud – Vice President
Emma Williamson – Secretary
Jordyn Young – Treasurer

IMPORTANT UPCOMING DATES:

2/15-2/16 - PET PICTURES

2/28 - END OF IP 3, 8

3/7 - ACCREDITATION DAY FOR VM4 STUDENTS

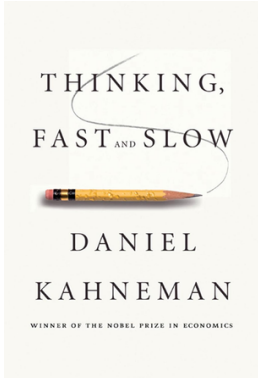


A world without veterinarians would be a world with less unconditional love.



VETERINARY READING RAINBOW®

A MONTHLY BOOK SUGGESTION FROM DR. SNIDER'S BOOKSHELVES



This month's book recommendation deviates from popular science and medicine writing. "Thinking, Fast and Slow" by Daniel Kahneman unpacks how our minds operate using two systems: the fast, intuitive, and emotional "System 1" and the slow, deliberate, and analytical "System 2." Kahneman, a Nobel laureate, reveals the biases and cognitive shortcuts that shape our decisions—often in ways we don't realize. With engaging examples and real-world applications, this book challenges us to rethink how we think, and I believe it has surprising relevance into issues allied to our veterinary students, everything from NAVLE preparation to clinical reasoning skills. - Dr. Snider



PAWSOME AWARD

Congratulations to Chandler Mossman as the January 2025 PAWSome Award Winner. Thank you for all your Pawsome work!

HONORS & AWARDS 2025

The Honors and Awards Ceremony will be held on April 27th, at the Stoney Creek Inn. Stay tuned for more details in the next few months.

Answer to this month's NAVLE prep question:
Answer: D) Clostridium tetani

FOCUS ON WELLNESS

While compared to other plants such as beans, legumes, nuts and seeds, fruit is lower in protein. However, people need at least 20 grams of protein per meal, so every bit helps - especially if you are following a plant-based diet. Below are nine fruits with the most protein:

Passion fruit, jackfruit, apricots, blackberries, guava, raisins, citrus fruits, and cantaloupe

(Source: "Start TODAY" newsletter - Copyright © 2025 TODAY)

OUR OFFICE

Timothy A. Snider, DVM, PhD, DACVP
Associate Dean of Academic and Student Affairs

Lisa McCubbins
Executive Assistant for Student Affairs

Lisa Thompson
Senior Student Support Specialist for Academic Affairs

Jennifer Hamilton
Educational Program Coordinator II

Stephanie McClaren
Educational Program Manager

Kathy Seay
Admissions Manager

Angelynn Simonsen
Financial Aid Advisor

Kerry Karaffa
Psychologist

Tiffany Sanford-Martens
Psychologist

Doug Tindall
Recruiter

A LITTLE DAD JOKE HUMOR

Q: What did the dog say to his girlfriend on Valentines Day?



A: I'm mutts about you!